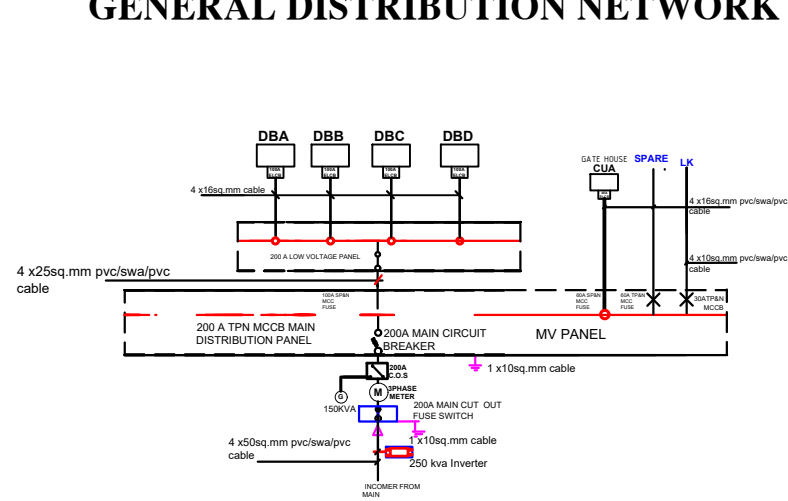


GENERAL NOTES

1. Before embarking on any part of this project, first study carefully and understand these drawings and other documents relating to this project.
2. Do not scale drawings. Refer any discrepancies to the Architects relating to this project.

GENERAL DISTRIBUTION NETWORK



GENERAL SCHEMATICS

FROM PHCN MAINS 4x50mm² PVC SINGLE CORE COPPER CABLE

200A MV PANEL	
POWER DEMAND	
DISTRIBUTION BOARD	(W)
DBA - FLOOR PLAN	5,040
DBB - FLOOR PLAN	16,420
DBC - FLOOR PLAN	9,220
DBD - FLOOR PLAN	23,540
GATE HOUSE CUA	1,925
LIGHTING KIOSK	1320
TOTAL	57,465W

LOAD SUMMARY FOR MAIN MV
 MAXIMUM POWER DEMAND = 57,465W
 MAXIMUM CURRENT DEMAND = 100A

GENERAL LOAD SUMMARY

LOAD ANALYSIS



PROJECT TITLE
 PROPOSED CONSTRUCTION OF
 WOMEN VOCATIONAL CENTER

LOCATION
 AT MALKOHI YOLA SOUTH,
 ADAMAWA STATE,
 NORTH - EAST NIGERIA

DWG NO:
 E10
 PREPARED BY: OKOKON Efanga//
 eokokon@iom.int
 DATE: MAY 2020